

Single-phase asynchronous motor

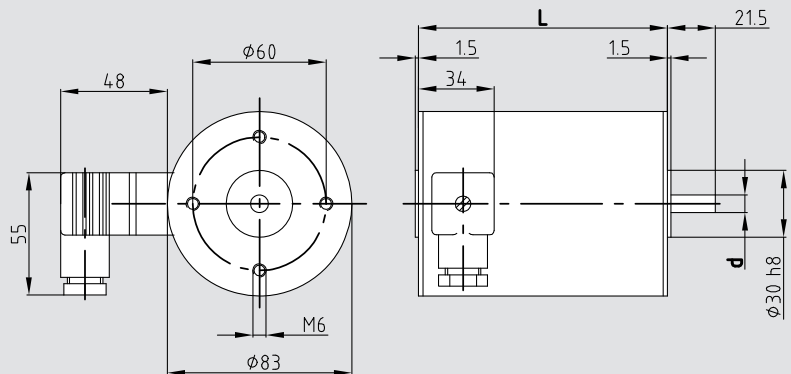
Properties: Connection: 230 V / 50 Hz AC system , optional designs for 110 V / 60 Hz or other voltages / frequencies
 Running capacitor required
 Connections using K2 type plug-in connectors
 Service life: 20,000 hours, S1 duty
 Insulation mat. class: B, optional F
 System of protection: IP 44, optional up to IP 65
 Special model: Design for short-time duty with high performance
 Options: Thermal protection, special shafts, special flanges, custom designed, stainless steel



| Type | Name | U | AC voltage | K 842 | K 862 | K 882 |
|------------------------|------------------------------|--------------------|------------------|------------|------------|------------|
| | Nominal voltages | | | 230 | 230 | 230 |
| Specification | Nominal power | P ₂ | W | 35.3 | 48.1 | 77.7 |
| | Nominal speed | N _{nom} | rpm | 2700 | 2700 | 2700 |
| | Nominal torque | T _{nom} | Ncm | 12.5 | 17 | 27.5 |
| | Starting torque | T _S | Ncm | 6.4 | 10.5 | 15.5 |
| | Nominal current | I _{nom} | mA | 240 | 390 | 600 |
| | No-load current | I ₀ | mA | 105 | 281 | 207 |
| Characteristics | Locked rotor speed | n _{break} | rpm | 2100 | 2150 | 2250 |
| | Locked rotor torque | T _{break} | Ncm | 16.5 | 27.0 | 52.5 |
| | Nominal efficiency | η | | 0.51 | 0.56 | 0.67 |
| Connection | Terminal resistance | R | Ohm | 103 | 63 | 41 |
| | Input power | P ₁ | W | 61.5 | 78.0 | 118.0 |
| | Running capacitor | C | μF | 3.0 | 4.5 | 8.0 |
| Dynamics | Weight | m | kg | 1.9 | 2.5 | 3.3 |
| | Moment of inertia | J | gcm ² | 750 | 1050 | 1400 |
| Thermal | Adm. ambient temperature | T _a | °C | -20 to +40 | -20 to +40 | -20 to +40 |
| | Max. adm. stator temperature | T _{max} | °C | +120 | +120 | +120 |
| Coupling | Shaft diameter | d | mm | 8 | 8 | 10 |
| | Max. axial force | F _a | N | 20 | 20 | 40 |
| | Max. radial force | F _r | N | 220 | 220 | 400 |

Dimensions

| Type | L / mm | d / mm |
|-------|--------|--------|
| K 842 | 92 | 8 f 6 |
| K 862 | 112 | 8 f 6 |
| K 882 | 132 | 10 f 6 |



System technology

| | | | |
|--|----------------|-------|-------|
| Recommended combinations other gears and extensions upon request | Worm gear | S 668 | S 769 |
| | Spur gear | Z 8 | M 7 |
| | Planetary gear | PM 60 | |
| | Rotary encoder | RV 30 | RI 30 |
| | Brake | B 3 | |

Single-phase asynchronous motor

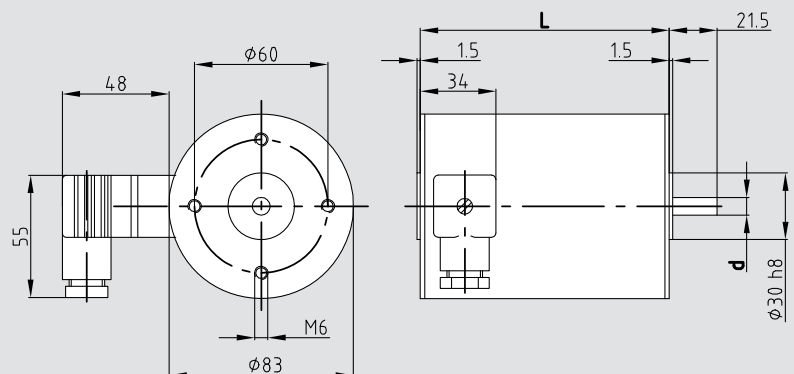
| | | |
|--------------------|------------------------|--|
| Properties: | Connection: | 230 V / 50 Hz AC system , optional designs for 110 V / 60 Hz or other voltages / frequencies Running capacitor required Connections using K2 type plug-in connectors |
| | Service life: | 20,000 hours, S1 duty |
| | Insulation mat. class: | B, optional F |
| | System of protection: | IP 44, optional up to IP 65 |
| | Special model: | Design for short-time duty with high performance |
| | Options: | Thermal protection, special shafts, special flanges, custom designed, stainless steel |



| Type | Name | | | K 844 | K 864 | K 884 |
|------------------------|------------------------------|--------------------|------------------|------------|------------|------------|
| | Nominal voltages | U | AC voltage | 230 | 230 | 230 |
| Specification | Nominal power | P ₂ | W | 17.7 | 23.1 | 40.8 |
| | Nominal speed | N _{nom} | rpm | 1300 | 1300 | 1300 |
| | Nominal torque | T _{nom} | Ncm | 13 | 17 | 30 |
| | Starting torque | T _S | Ncm | 11.7 | 13.5 | 18.0 |
| | Nominal current | I _{nom} | mA | 190 | 250 | 400 |
| | No-load current | I ₀ | mA | 125 | 240 | 343 |
| Characteristics | Locked rotor speed | n _{break} | rpm | 1100 | 1100 | 1100 |
| | Locked rotor torque | T _{break} | Ncm | 17.5 | 27.5 | 45.0 |
| | Nominal efficiency | η | | 0.38 | 0.43 | 0.49 |
| Connection | Terminal resistance | R | Ohm | 229 | 119 | 41 |
| | Input power | P ₁ | W | 43 | 60 | 85 |
| | Running capacitor | C | μF | 2.5 | 3.0 | 5.0 |
| Dynamics | Weight | m | kg | 1.9 | 2.5 | 3.4 |
| | Moment of inertia | J | gcm ² | 750 | 1050 | 1400 |
| Thermal | Adm. ambient temperature | T _a | °C | -20 to +40 | -20 to +40 | -20 to +40 |
| | Max. adm. stator temperature | T _{max} | °C | +120 | +120 | +120 |
| Coupling | Shaft diameter | d | mm | 8 | 8 | 10 |
| | Max. axial force | F _a | N | 20 | 20 | 40 |
| | Max. radial force | F _r | N | 220 | 220 | 400 |

Dimensions

| Type | L / mm | d / mm |
|-------|--------|--------|
| K 844 | 92 | 8 f 6 |
| K 864 | 112 | 8 f 6 |
| K 884 | 132 | 10 f 6 |



System technology

| | | | |
|--|----------------|-------|-------|
| Recommended combinations other gears and extensions upon request | Worm gear | S 668 | S 769 |
| | Spur gear | Z 8 | M 7 |
| | Planetary gear | PM 60 | |
| | Rotary encoder | RV 30 | RI 30 |
| | Brake | B 3 | |