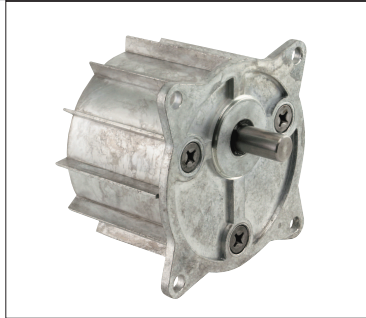


Spur gear

Properties:

General:	Multi-stage, closed spur gear For use in combination with our motors. Single gear with ball-bearing ingoing shaft (2 bearings back-to-back) Lifetime grease lubrication
Housing:	Zinc diecast, machined User-defined installation
Tooth system tech.:	Gear-pinion combinations on a common needle bearing Ball bearing end shaft
Options:	Planet gears



Loading capacity	Max. radial force	N	400									
	Max. axial force	N	40									
	Max. input speed	rpm	4500									
	Temperature range	°C	-20° – +40°									
Mounting	Shaft diameter	mm	10									
	Weight	kg	0.6									
	Mounting part (standard)		front side									
Translations	i	Stages	M (Nm)	η	i	Stages	M (Nm)	η	i	Stages	M (Nm)	η
	5	2	0.7	0.82	60	4	5.6	0.66	160	6	6	0.54
	10	2	0.7	0.82	75	4	5.6	0.66	200	6	6	0.54
	15	2	0.7	0.82	100	5	6	0.6	240	6	6	0.54
	20	3	2.8	0.74	125	5	6	0.6	300	6	6	0.54
	25	3	2.8	0.74	156	5	6	0.6	360	6	6	0.54
	30	3	2.8	0.74	188	5	6	0.6	540	6	6	0.54
	40	4	5.6	0.66	225	5	6	0.6	675	6	6	0.54
	50	4	5.6	0.66	270	5	6	0.6	810	6	6	0.54

Dimensions

